

Year 1 Knowledge Organiser

Change - Our Local Area

The name of the town where we live is **Workso**. Do you know the address of your house?
Some important places in Workso are...

The Priory Church



The Gatehouse



Castle Hill



The River Ryton



The Market Cross



The Canch Mill



Types of houses that people live in today

Detached



Semi-detached



Terraced



Flat or Apartment



Cottage

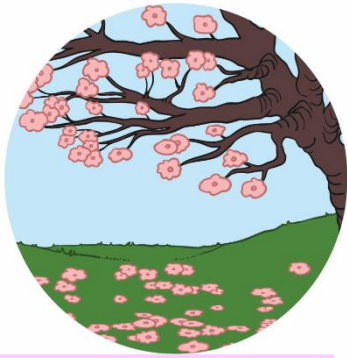


Bungalow



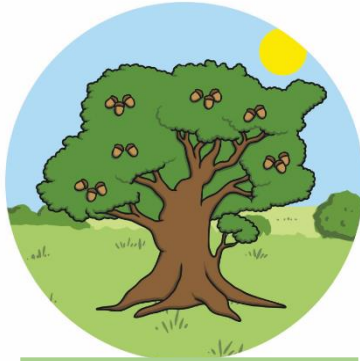
Change – Weather and Seasons

Spring



Trees begin to sprout new leaves. The weather gets warmer and the days get longer.

Summer



Trees are full of life. Days are at their longest and the weather is usually warm.

Autumn



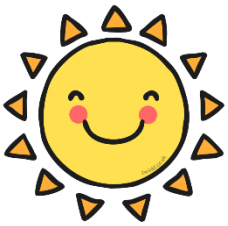
Leaves turn brown and fall off trees. The weather gets cooler and the days get shorter.

Winter



Many trees have lost all their leaves. Days are at their shortest and the weather is cold.

Sunny



Raining



Cloudy



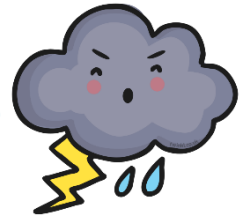
Snowing



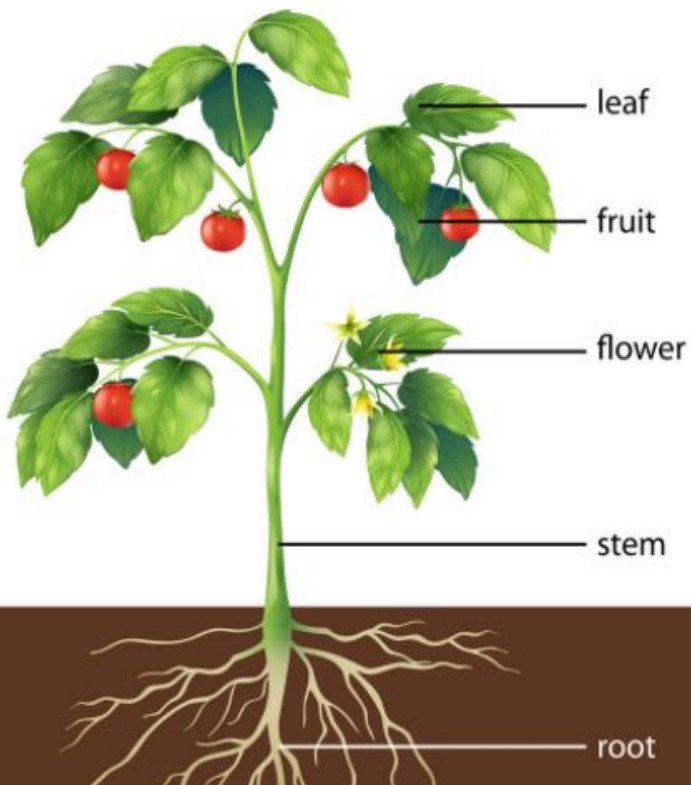
Windy



Stormy



Change – Plants



To grow and stay healthy, a plant needs...



Light
Water
Warmth
Nutrients



Deciduous trees lose their leaves in winter.

Evergreen trees do not lose their leaves in winter.